



SOCIAL PROGRESS INDEX

Professor Michael E. Porter

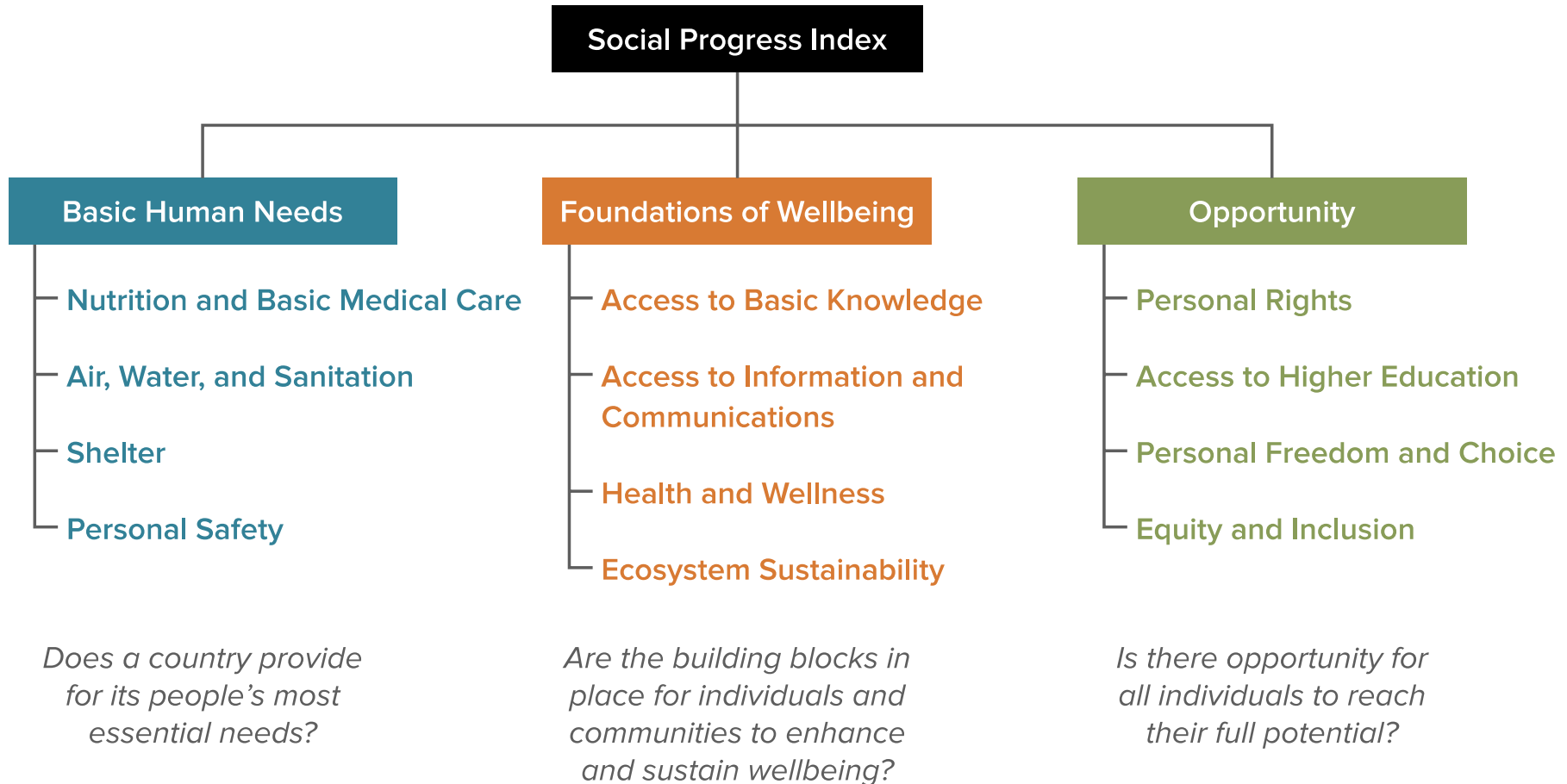
Harvard Business School

**SOCIAL
PROGRESS
IMPERATIVE**

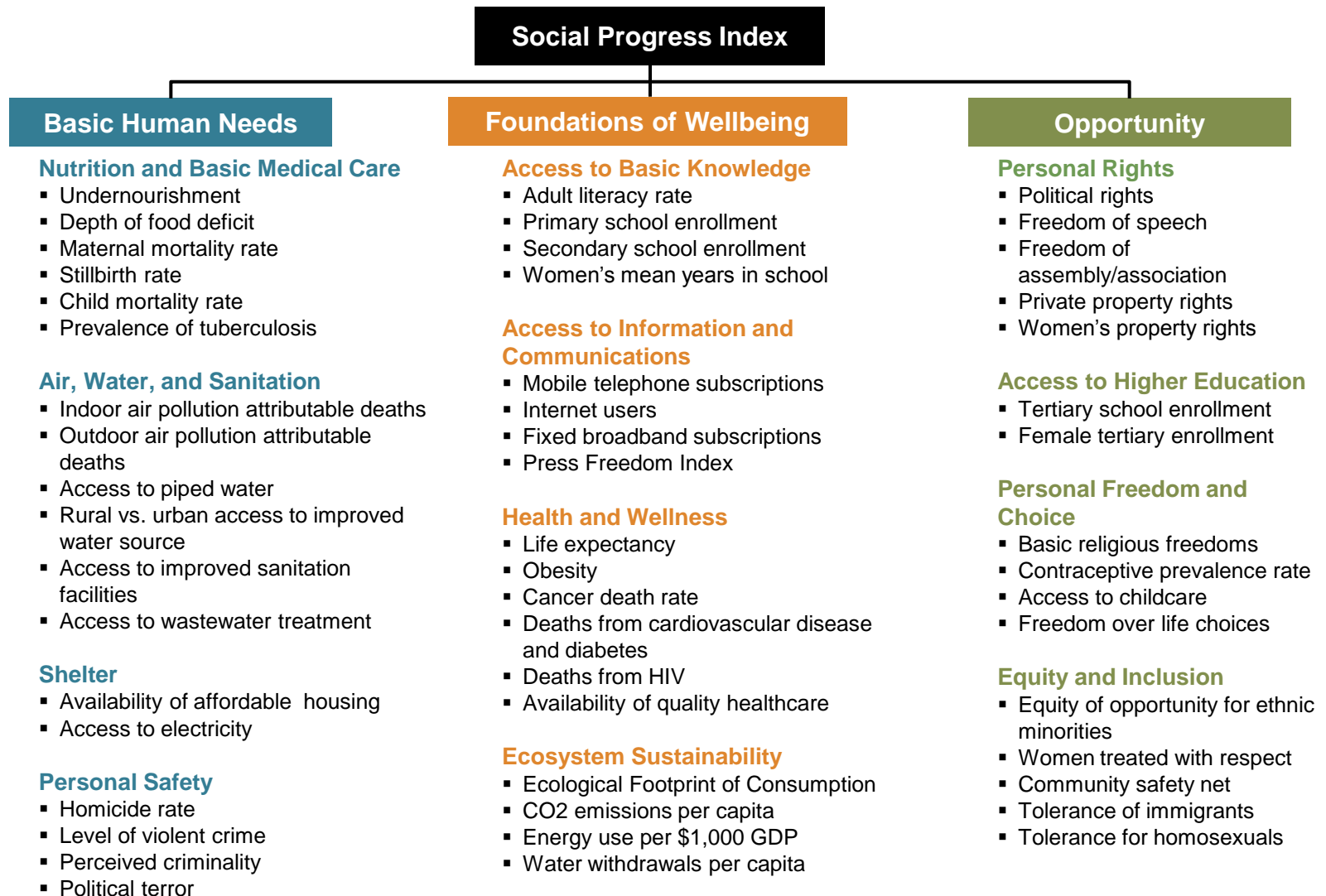
WHAT IS SOCIAL PROGRESS?

Social progress is the capacity of a society to meet the **basic human needs** of its citizens, establish the **building blocks** that allow citizens and communities to enhance and sustain the quality of their lives, and create the **conditions for all individuals to reach their full potential.**

SOCIAL PROGRESS INDEX MODEL



SOCIAL PROGRESS INDEX INDICATORS



2013 SOCIAL PROGRESS INDEX RESULTS

1. Sweden
2. United Kingdom
3. Switzerland
4. Canada
5. Germany
6. United States
7. Australia
8. Japan
9. France
10. Spain
11. Korea, Rep.
12. Costa Rica
13. Poland
14. Chile
15. Argentina
16. Israel
17. Bulgaria
18. Brazil
19. United Arab Emirates
20. Turkey
21. Dominican Republic
22. Colombia
23. Thailand
24. Peru
25. Mexico

26. Philippines
27. Paraguay
28. Tunisia
29. Georgia
30. Viet Nam
31. Jordan
32. China
33. Russian Federation
34. Kazakhstan
35. Botswana
36. Sri Lanka
37. Morocco
38. Indonesia
39. South Africa
40. Egypt, Arab Rep.
41. Ghana
42. Bangladesh
43. India
44. Senegal
45. Kenya
46. Rwanda
47. Mozambique
48. Uganda
49. Nigeria
50. Ethiopia

COSTA RICA



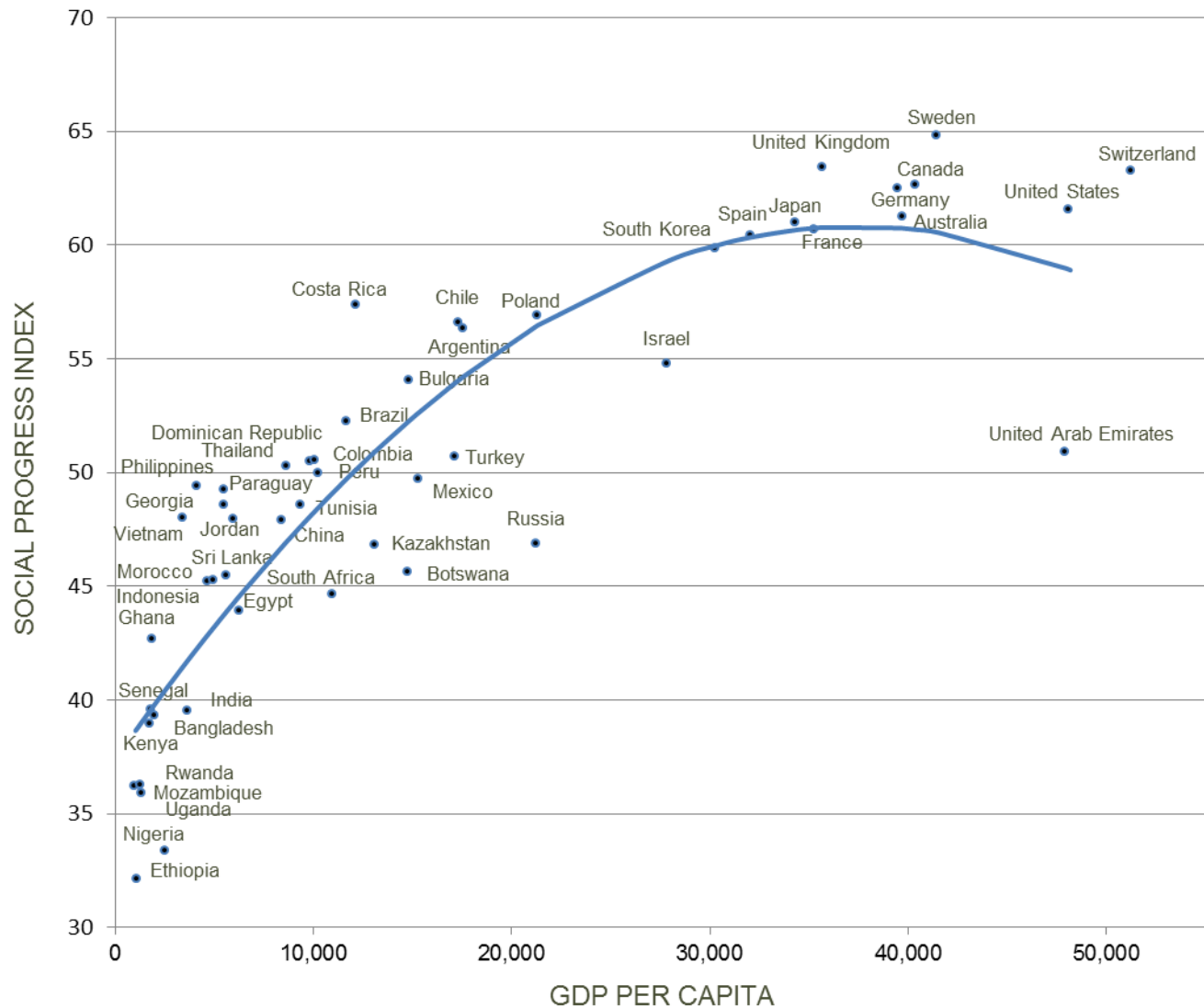
SOCIAL
PERFORMANCE INDEX 12

GDP
PER CAPITA RANK (2011) 23

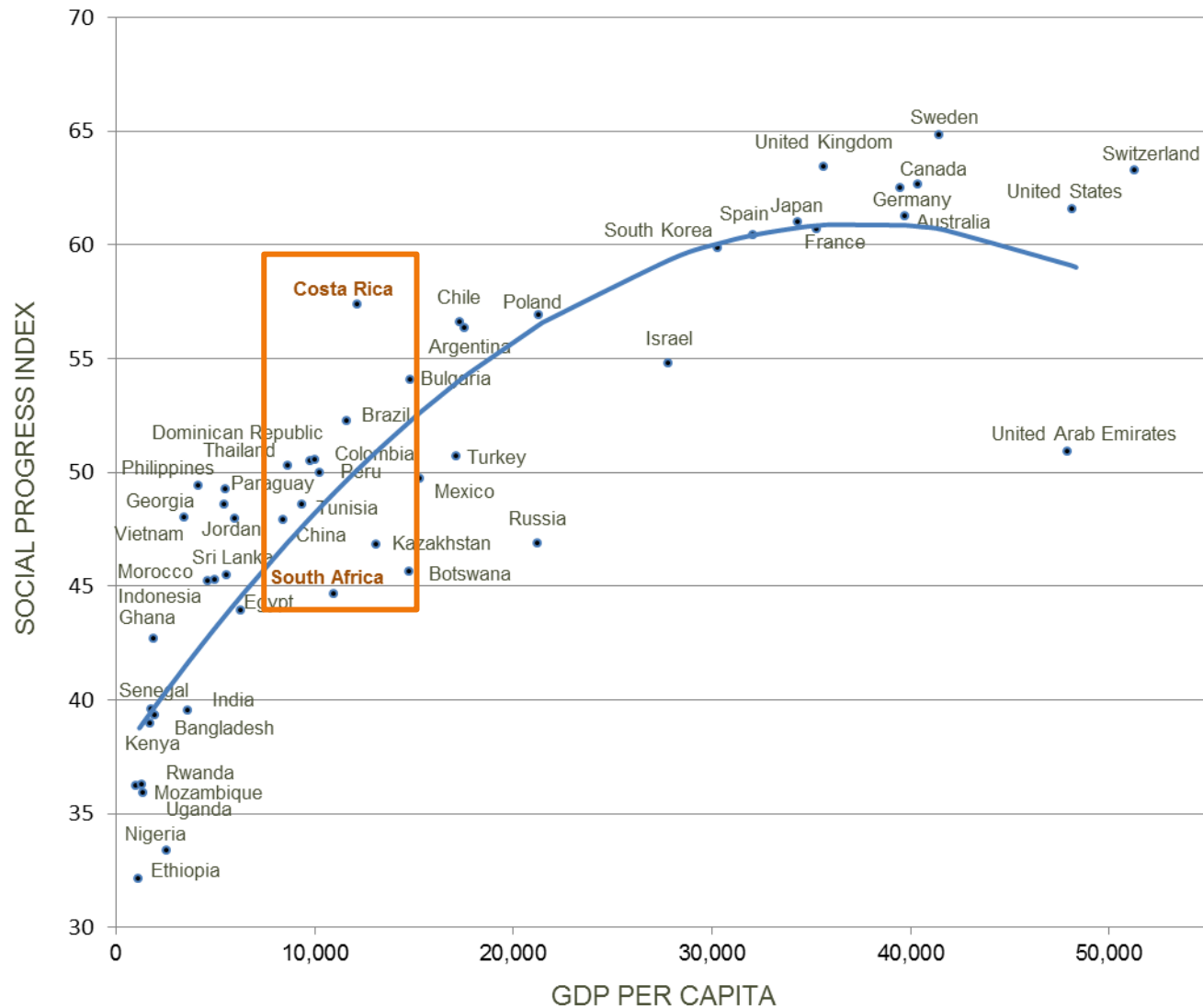
DIMENSIONS

Opportunity	8
Foundations of Wellbeing	13
Basic Human Needs	19

SOCIAL PROGRESS INDEX VS. GDP PER CAPITA



COMPARING COUNTRY PERFORMANCE: COSTA RICA VS. SOUTH AFRICA



Costa Rica



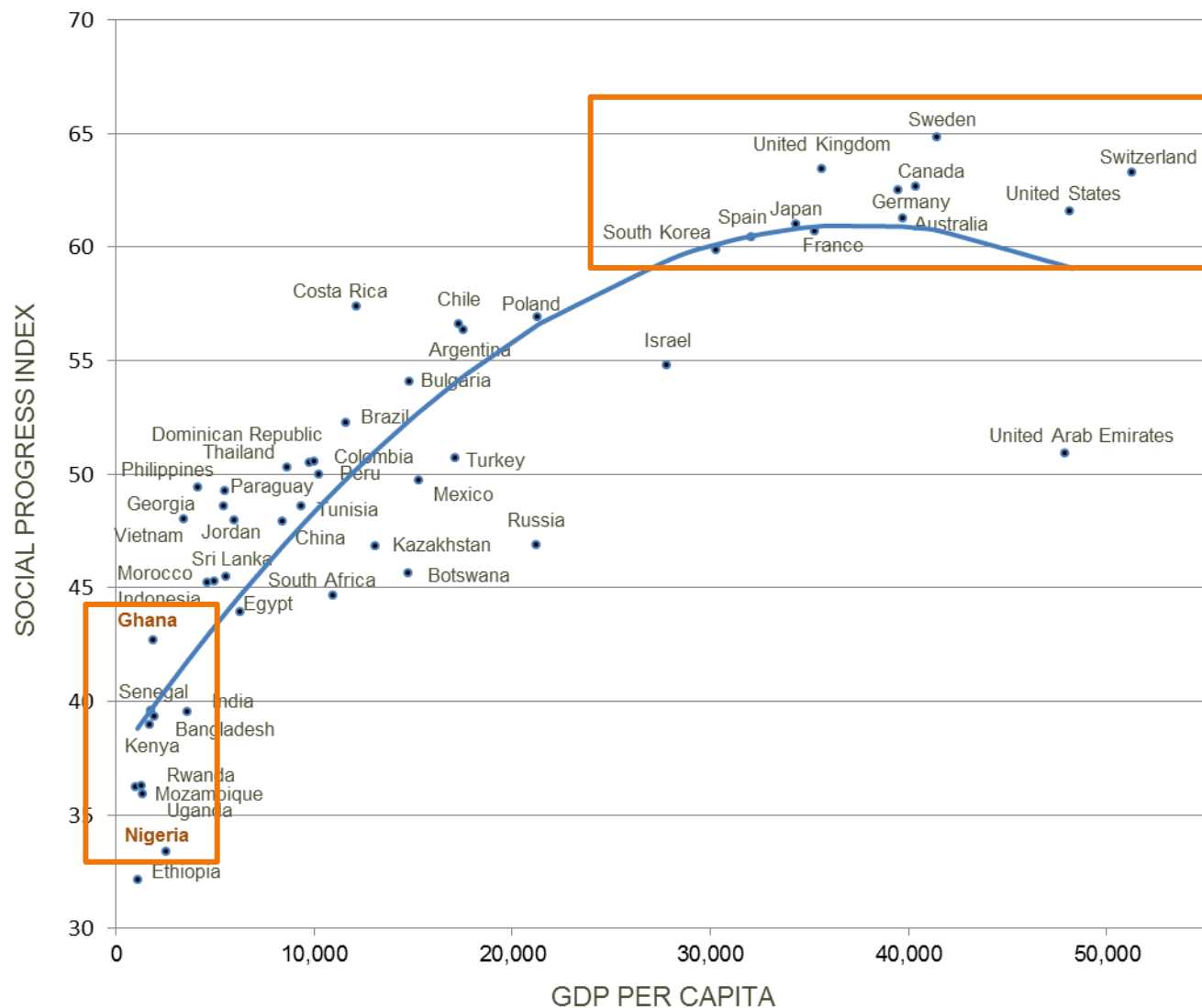
STRENGTHS

Personal Freedom and Choice	2
Basic religious freedoms	1
Freedom over life choices	3
Contraceptive prevalence rate	4
Access to childcare	17
Personal Rights	10
Women's property rights	1
Political rights	1
Freedom of assembly/association	1
Freedom of speech	1
Private property rights	18
Equity and Inclusion	10
Equity of opportunity for ethnic minorities	1
Tolerance for homosexuals	14
Community safety net	16
Tolerance of immigrants	18
Health and Wellness	13
Life expectancy	12
Deaths from cardiovascular disease and diabetes	14
Deaths from HIV	19
Availability of quality healthcare	19
Cancer death rate	21
Nutrition and Basic Medical Care	16
Undernourishment	1
Prevalence of tuberculosis	11
Child mortality rate	16
Stillbirth rate	16
Maternal mortality rate	21

WEAKNESSES

Access to Basic Knowledge	31
Secondary school enrollment	39
Primary school enrollment	32
Women' s Mean Years in school	23
Adult literacy rate	20
Women treated with respect	45
Obesity	37
Depth of food deficit	27

COMPARING COUNTRY PERFORMANCE: LOW AND HIGH INCOME COUNTRIES



	GDP per capita	Social Progress Index	Basic Human Needs	Foundations of Wellbeing	Opportunity	Nutrition and Basic Medical Care	Air, Water and Sanitation	Shelter	Personal Safety	Access to Information	Access to Basic Knowledge	Health and Wellness	Ecosystem Sustainability	Personal Rights	Access to Higher Education	Personal Freedom and Choice	Equity and Inclusion
Sweden	41,467	64.81	63.61	61.73	69.09	61.52	63.66	58.97	70.28	73.29	63.68	64.34	45.61	69.13	68.41	72.78	66.04
United Kingdom	35,657	63.41	62.76	62.57	64.91	61.04	64.47	61.74	63.79	69.91	64.04	68.10	48.23	69.13	60.59	62.70	67.22
Switzerland	51,262	63.28	63.83	62.58	63.43	61.61	63.33	60.08	70.28	76.06	58.99	66.91	48.35	69.13	56.19	66.38	62.02
Canada	40,370	62.63	63.85	55.74	68.30	61.33	59.82	63.95	70.28	68.77	65.03	65.80	23.34	69.13	62.18	67.78	74.11
Germany	39,491	62.47	64.76	61.42	61.24	61.95	63.77	66.72	66.61	73.34	61.52	66.13	44.71	60.72	55.39	64.46	64.37
United States	48,112	61.56	62.26	52.49	69.92	61.11	60.77	66.16	60.99	64.04	61.28	62.65	21.98	68.47	78.13	64.45	68.63
Australia	39,721	61.26	60.67	54.44	68.67	61.52	62.28	53.99	64.91	64.37	59.95	67.17	26.27	69.13	70.39	68.52	66.64
Japan	34,314	61.01	66.04	59.51	57.49	60.51	62.27	72.80	68.58	65.71	64.72	63.14	44.47	66.08	57.73	51.95	54.18
France	35,246	60.70	61.04	59.97	61.08	61.40	62.80	57.86	62.08	67.72	62.45	63.64	46.08	63.05	58.56	63.47	59.24
Spain	32,045	60.43	58.98	57.97	64.34	61.37	63.61	50.67	60.25	62.91	61.13	64.13	43.70	66.50	68.71	53.12	69.03
Korea, Rep.	30,286	59.86	62.16	58.84	58.57	59.57	61.22	60.08	67.79	69.88	64.21	61.45	39.82	64.77	74.66	46.47	48.37
Costa Rica	12,157	57.36	54.75	54.90	62.43	58.70	53.17	52.64	54.48	54.68	49.87	59.80	55.26	63.86	52.02	69.37	64.46
Poland	21,261	56.92	56.58	56.55	57.63	61.17	60.47	39.77	64.91	60.68	61.43	56.79	47.29	60.42	67.49	55.46	47.13
Chile	17,310	56.60	56.61	54.89	58.31	58.27	57.15	53.26	57.76	54.51	58.37	57.47	49.19	62.22	61.93	52.03	57.06
Argentina	17,554	56.32	51.84	55.70	61.41	57.93	52.44	49.27	47.72	53.54	59.27	59.25	50.72	50.93	66.94	62.34	65.43
Israel	27,825	54.79	54.19	59.16	51.03	61.70	62.41	43.39	49.25	61.16	62.92	65.35	47.22	54.44	61.53	47.20	40.94
Bulgaria	14,825	54.08	58.40	51.93	51.90	57.94	63.66	57.13	54.87	56.30	60.48	47.37	43.57	54.63	58.85	49.04	45.07
Brazil	11,640	52.27	48.24	51.60	56.95	55.41	51.86	53.60	32.10	51.44	52.65	47.73	54.59	57.27	43.56	57.75	69.23
United Arab Emirates	47,893	50.89	60.12	45.38	47.16	60.30	57.84	58.42	63.92	58.40	54.13	59.09	9.89	35.08	45.99	56.29	51.30
Turkey	17,110	50.69	57.80	51.54	42.75	57.96	59.74	64.50	48.98	45.28	53.16	55.55	52.19	41.65	55.33	33.66	40.35
Colombia	10,033	50.52	45.43	50.51	55.63	53.52	47.47	52.65	28.07	44.61	49.43	49.06	58.95	50.06	51.20	56.34	64.93
Dominican Republic	9,796	50.52	48.20	49.80	53.55	48.45	52.29	56.93	35.15	45.15	48.37	46.97	58.69	50.99	48.34	59.57	55.28
Thailand	8,646	50.28	54.99	46.92	48.93	56.08	49.58	72.40	41.90	42.32	49.96	50.23	45.19	42.81	54.39	57.99	40.54
Peru	10,234	50.00	46.59	51.89	51.53	52.67	47.28	44.07	42.35	47.18	53.61	50.72	56.04	50.58	51.22	58.78	45.55
Mexico	15,266	49.73	49.33	50.79	49.08	58.83	55.26	54.64	28.59	43.69	53.91	55.95	49.61	53.70	43.85	50.55	48.20
Philippines	4,119	49.41	45.75	50.76	51.72	42.94	47.25	55.57	37.24	41.06	50.14	51.47	60.39	45.89	44.69	57.76	58.52
Paraguay	5,501	49.24	46.97	47.49	53.25	43.55	43.25	57.08	44.00	43.03	46.69	51.61	48.64	52.80	48.21	51.16	60.82
Tunisia	9,351	48.61	50.09	50.81	44.91	57.32	55.86	42.22	44.97	45.27	46.71	52.40	58.89	42.06	48.37	47.95	41.25
Georgia	5,465	48.56	53.00	52.09	40.58	42.63	56.60	57.45	55.34	47.95	60.20	47.41	52.82	49.40	45.43	39.43	28.06
Viet Nam	3,412	47.99	55.16	48.31	40.50	49.67	42.91	66.54	61.50	43.17	50.39	46.88	52.80	27.97	41.32	53.42	39.27
Jordan	5,966	47.97	52.12	50.76	41.04	55.81	57.61	41.64	53.44	43.97	55.38	52.63	51.05	35.73	49.03	38.31	41.09
China	8,400	47.92	52.95	48.21	42.59	53.44	47.44	63.86	47.08	40.84	49.80	54.17	48.04	30.36	43.25	60.66	36.10
Russian Federation	21,246	46.89	46.12	46.61	47.94	56.85	55.73	35.95	35.94	54.80	57.18	39.14	35.31	34.58	68.38	48.16	40.63
Kazakhstan	13,099	46.85	50.76	42.55	47.23	56.11	57.42	41.85	47.67	50.15	56.77	41.89	21.37	34.17	52.63	54.04	48.08
Botswana	14,746	45.61	44.14	44.93	47.76	37.91	44.65	38.56	55.46	46.88	44.39	30.36	58.11	54.61	34.61	52.74	49.09
Sri Lanka	5,582	45.47	46.31	50.65	39.46	45.19	44.48	48.01	47.55	34.54	53.55	53.75	60.77	35.13	39.25	44.78	38.67
Morocco	4,952	45.27	49.96	45.58	40.27	50.24	44.24	49.23	56.13	45.92	32.17	43.83	60.39	40.31	36.95	47.33	36.50
Indonesia	4,636	45.24	45.52	49.30	40.89	46.19	38.40	54.67	42.81	39.16	51.29	50.02	56.74	49.26	41.41	36.92	35.97
South Africa	10,960	44.67	40.02	43.86	50.12	38.06	48.06	44.45	29.50	48.31	48.44	35.28	43.41	55.54	39.74	47.35	57.86
Egypt, Arab Rep.	6,281	43.94	49.88	46.86	35.09	55.92	60.85	38.38	44.39	42.92	44.18	50.30	50.03	39.04	45.59	22.57	33.16
Ghana	1,871	42.69	40.83	43.88	43.36	42.09	33.54	38.71	48.98	43.02	35.02	35.24	62.24	55.65	36.01	38.93	42.86
Bangladesh	1,777	39.59	39.60	43.32	35.84	33.63	37.91	44.98	41.90	32.80	31.93	46.62	61.92	39.62	35.39	35.35	33.01
India	3,627	39.51	40.24	41.60	36.67	38.48	37.03	49.18	36.26	35.30	35.21	39.16	56.75	50.17	38.65	31.36	26.52
Senegal	1,967	39.30	39.15	39.04	39.72	31.48	33.49	38.80	52.85	39.91	19.25	35.14	61.87	46.93	34.28	31.97	45.68
Kenya	1,710	38.98	32.91	45.32	38.72	28.79	31.67	34.71	36.45	40.77	42.88	32.49	65.14	40.21	32.77	34.49	47.41
Rwanda	1,282	36.29	29.76	41.30	37.82	33.29	25.28	19.44	41.04	28.76	33.19	35.65	67.60	35.43	33.90	52.93	29.03
Mozambique	975	36.20	30.46	35.52	42.62	15.00	24.92	28.80	53.12	33.94	25.34	23.59	59.18	42.13	33.10	34.46	60.81
Uganda	1,345	35.91	30.63	40.72	36.38	26.86	27.62	25.72	42.30	36.68	33.74	26.97	65.49	31.89	34.12	33.60	45.89
Nigeria	2,533	33.39	27.96	37.04	35.19	24.80	28.11	36.72	22.23	36.95	21.02	26.18	64.00	37.18	35.42	23.47	44.66
Ethiopia	1,109	32.13	26.69	34.66	35.04	21.91	17.07	21.81	45.97	28.97	20.56	23.03	66.09	30.06	33.93	32.42	43.76

www.socialprogressimperative.org

Data

Countries

Network

About

Publications

Blog

Press

Help

Contact

**SOCIAL
PROGRESS
IMPERATIVE**

SOCIAL PROGRESS IMPERATIVE

Guiding Social Investment

The Social Progress Imperative's mission is to advance global human wellbeing, by combining national social performance and capacity indicators with solutions-oriented outreach to sector leaders, and grassroots champions, who together can effect large-scale change. Social progress is defined as the capacity of a society to meet the basic human needs of its citizens, establish the building blocks that allow citizens and communities to enhance and sustain the quality of their lives, and create the conditions for all individuals to reach their full potential.

[Learn more about the Social Progress Imperative](#)



TARGET AUDIENCES

- Policy-makers
- International development organizations
- Business leaders
- Civil society
- Philanthropists
- Impact investors

ROLE OF SOCIAL PROGRESS NETWORK

- Interpret and disseminate results
- Help extend and enhance data collection and local and regional research
- Lobby the local government at all levels to pursue policy changes related to social progress priorities
- Provide continuity of social progress efforts across changes in government

THE SOCIAL PROGRESS NETWORK IN PARAGUAY

- The national government has adopted the Social Progress Index as an official measure of national performance
- A local network, with participation of independent foundations and NGOs is forming to:
 - disseminate Index results
 - work with government to identify needed policy changes

Paraguay Social Progress Network:

Fundación Paraguaya
Desarrollo en Democracia
Fundación Avina
Social Cabinet of the Paraguayan Government
Association of Christian Businessmen

advised by:
INCAE Business School
Fundación Latinoamérica Posible

www.socialprogressimperative.org

Twitter: @socprogress

#socialprogress

partner@social-progress.org